



Center for Advanced  
Aviation System Development

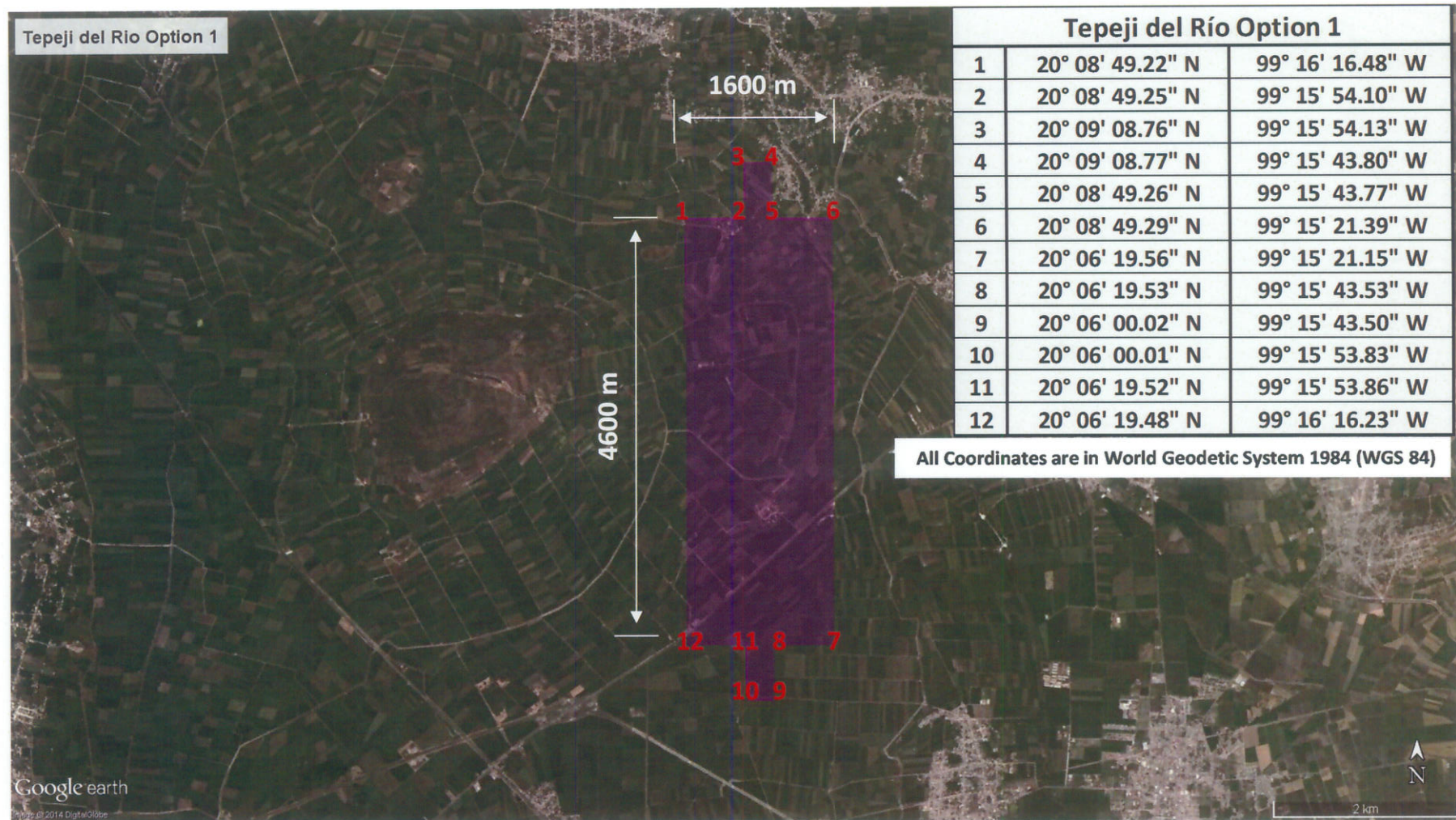
## Potential Hidalgo Airport Sites

### *Preliminary Boundary Areas*

MITRE is assisting Aeropuertos y Servicios Auxiliares (ASA) in collaboration with the Office of the Governor of the State of Hidalgo in identifying a feasible site for developing a new, one-runway airport in Hidalgo. The figures contained in this document (not in order of priority) show the dimensions and coordinates of the areas being considered by MITRE at this time. **The information is preliminary and subject to change**, and is only being provided to assist officials of the State of Hidalgo in conducting preliminary non-aeronautical investigations of potential issues that could impede airport construction. Examples of potential impediments include soil/subsoil composition, flooding, existing infrastructure, environmental and archeological concerns, and any other potentially disruptive conditions. The State of Hidalgo should also examine whether the potential airport sites are appropriate from a social, political, land acquisition, and environmental point of view.

Please send to MITRE the information requested above by 30 June 2014.

Copy for Lic. Manuel Ángel Núñez Soto

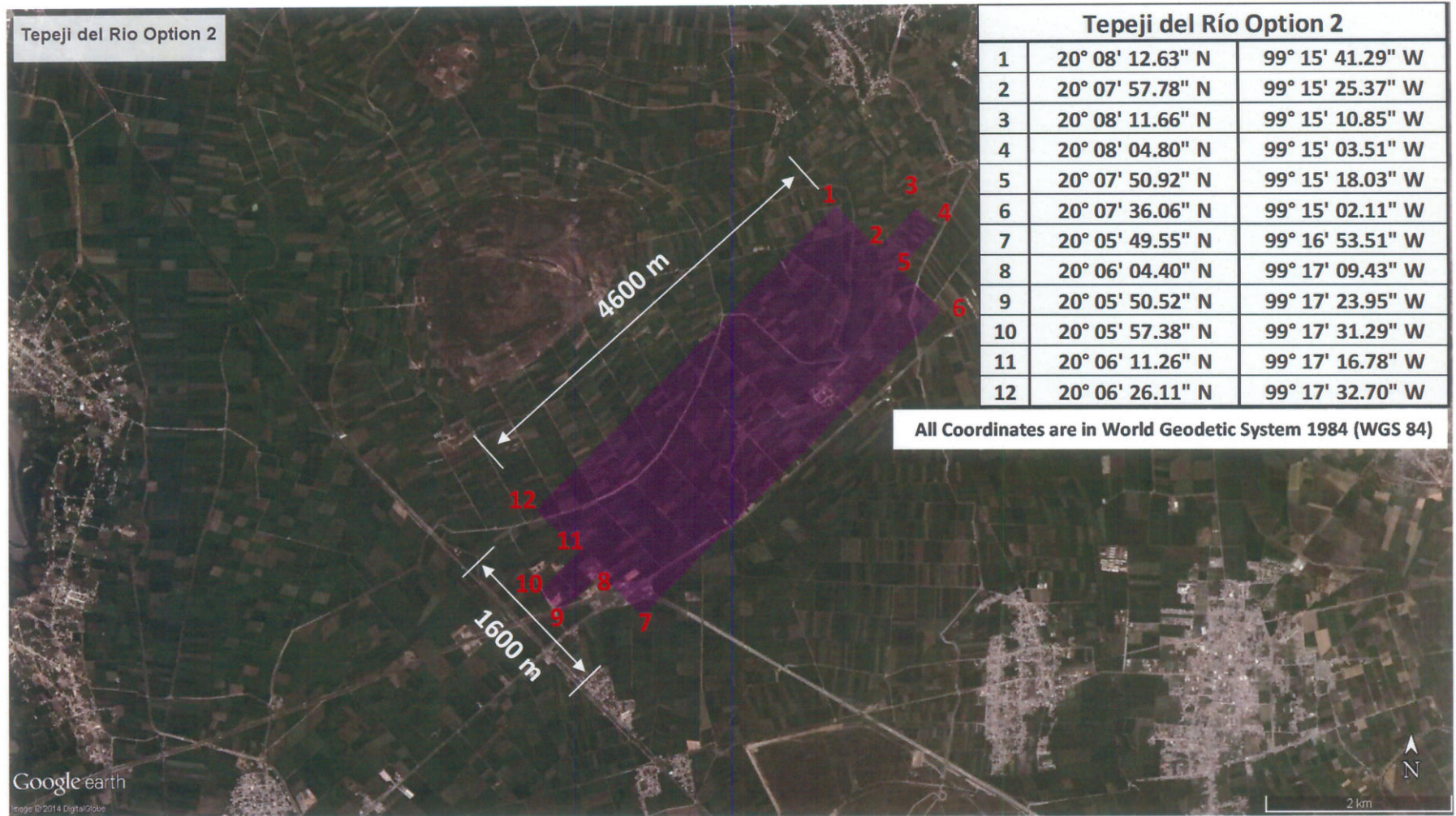


Source: Google Earth

**Note:** Use this information carefully, as it is preliminary and subject to change.

Figure 1. Tepeji del Río: Option 1



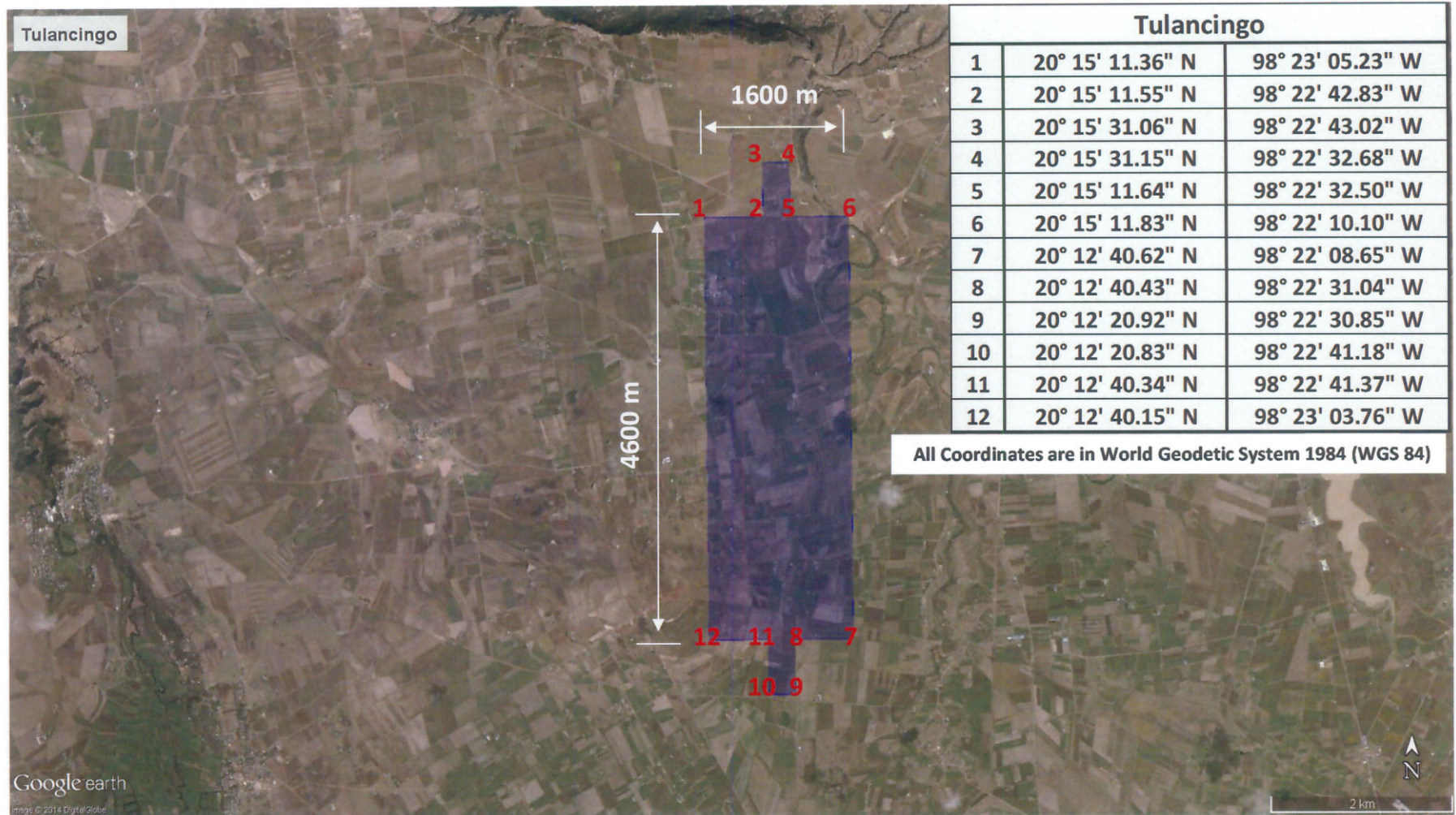


Source: Google Earth

**Note:** Use this information carefully, as it is preliminary and subject to change.

Figure 2. Tepeji del Río: Option 2

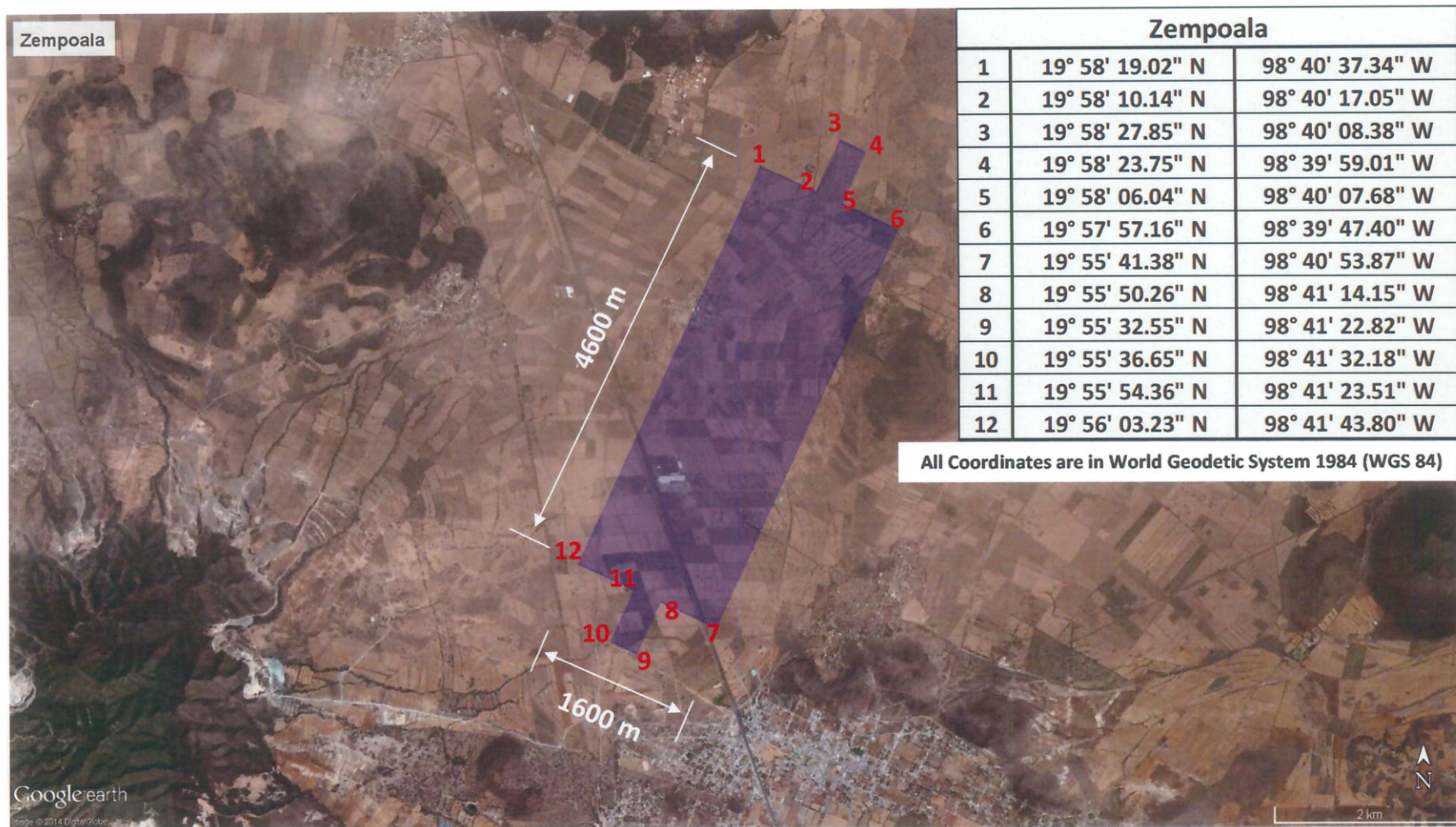




Source: Google Earth

**Note:** Use this information carefully, as it is preliminary and subject to change.**Figure 3. Tulancingo**



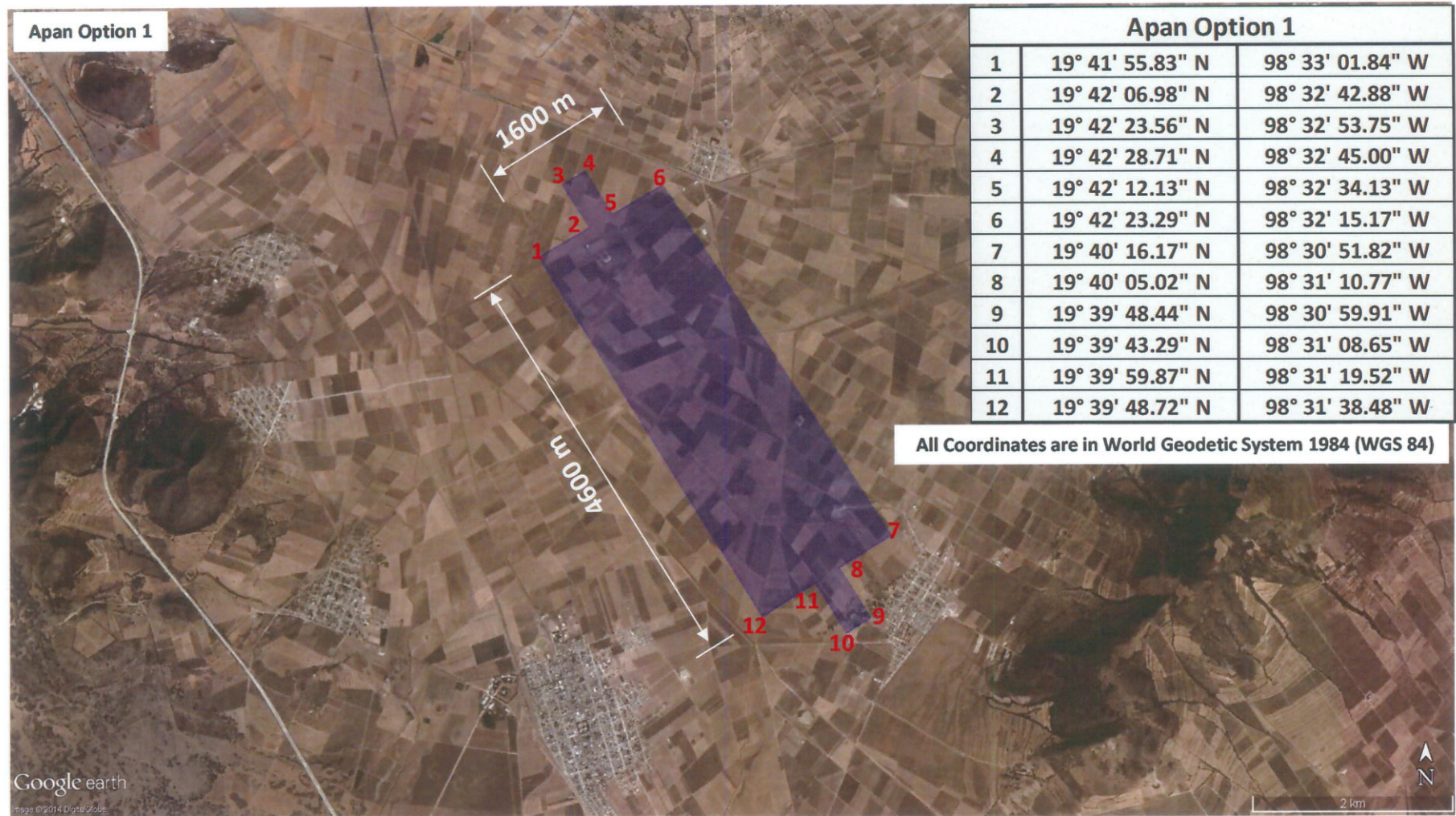


Source: Google Earth

**Note:** Use this information carefully, as it is preliminary and subject to change.

Figure 4. Zempoala

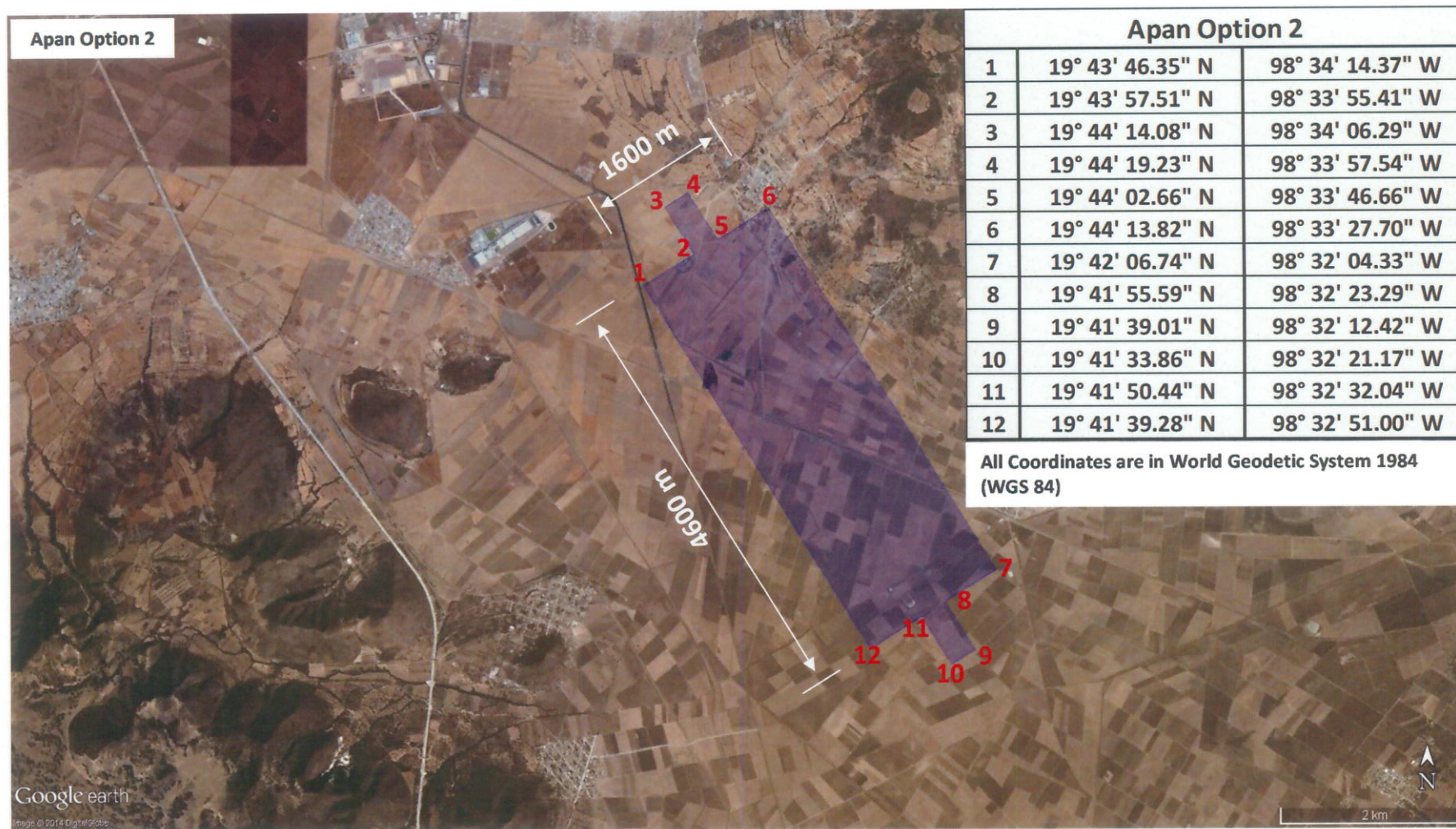




Source: Google Earth

**Note:** Use this information carefully, as it is preliminary and subject to change.**Figure 5. Apan: Option 1**





Source: Google Earth

**Note:** Use this information carefully, as it is preliminary and subject to change.

Figure 6. Apan: Option 2